

INSTRUCTIONS FOR REGULATING INDEPENDENT TEMPERATURE CONTROL FOR SYNCHRO MODEL .



ITC + ES
INDIPENDENT TEMPERATURE CONTROL
+ ENERGY SAVING



USER

MAIN SWITCH OPERATION POSITION



0

SWITCH OFF MACHINE



1

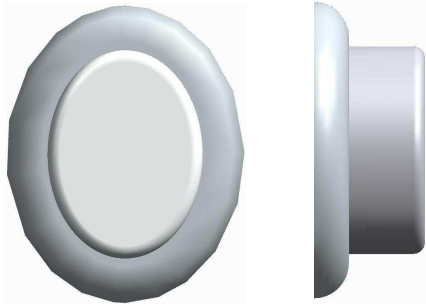
**WATER FILL AND
CURRENT WITHOUT
BOILER HEATING**



2

**POWER AND HEATING
BOILER**

SWITCH HEATING SERVICES BOILER



**HALF POWER HEATING
SERVICES BOILER**



**FULL POWER SERVICES
BOILER HEATING**

SWITCH HEATING BOILER GROUP



**HALF POWER HEATING
GROUP BOILER**



**FULL POWER BOILER
GROUP HEATING**

INITIALIZING

- AFTER YOU TURN THE MACHINE ON, THE **oFF** SIGN WILL APPEAR ON THE DISPLAY.



- TO TURN ON THE TEMPERATURE CONTROL, PRESS THE BUTTON INDICATED AND A VALUE WILL APPEAR ON THE DISPLAY **XXX**

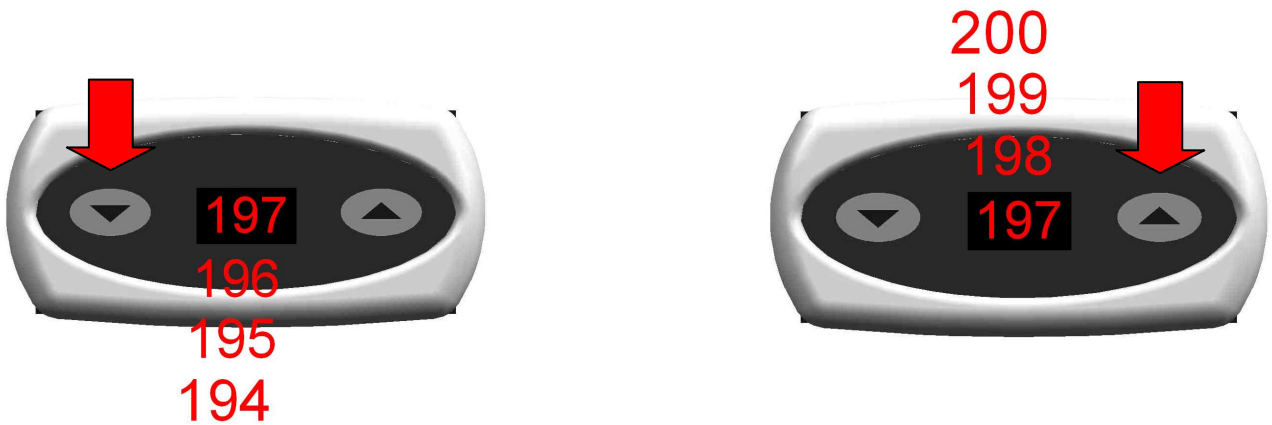


PROGRAMMING THE DESIRED TEMPERATURE

- PRESS THE INDICATED BUTTON ON THE TOUCHPAD AND THE LETTERS **PrG** WILL APPEAR ON THE DISPLAY.



- IMMEDIATELY PRESS THE BUTTON “DX” UNTIL THE DISPLAY SHOWS A VALUE, CONTINUE PRESSING THE “DX” BUTTON TO INCREASE THE TEMPERATURE OR PRESS THE BUTTON “SX” TO LOWER THE TEMPERATURE.



THE TEMPERATURE THAT YOU WISH TO PROGRAM CANNOT BE LESS THAN 176°F OR MORE THAN 266°F.

AFTER 3 SECONDS, FROM YOUR FINAL INPUT, THE PROGRAM IS IN MEMORY AND THE ACTUAL TEMPERATURE WILL APPEAR ON THE DISPLAY.

TURNING OFF

- TO TURN OFF THE TEMPERATURE CONTROL, PRESS FOR 2 SECONDS THE BUTTON INDICATED UNTIL THE **oFF** SIGN APPEARS.

